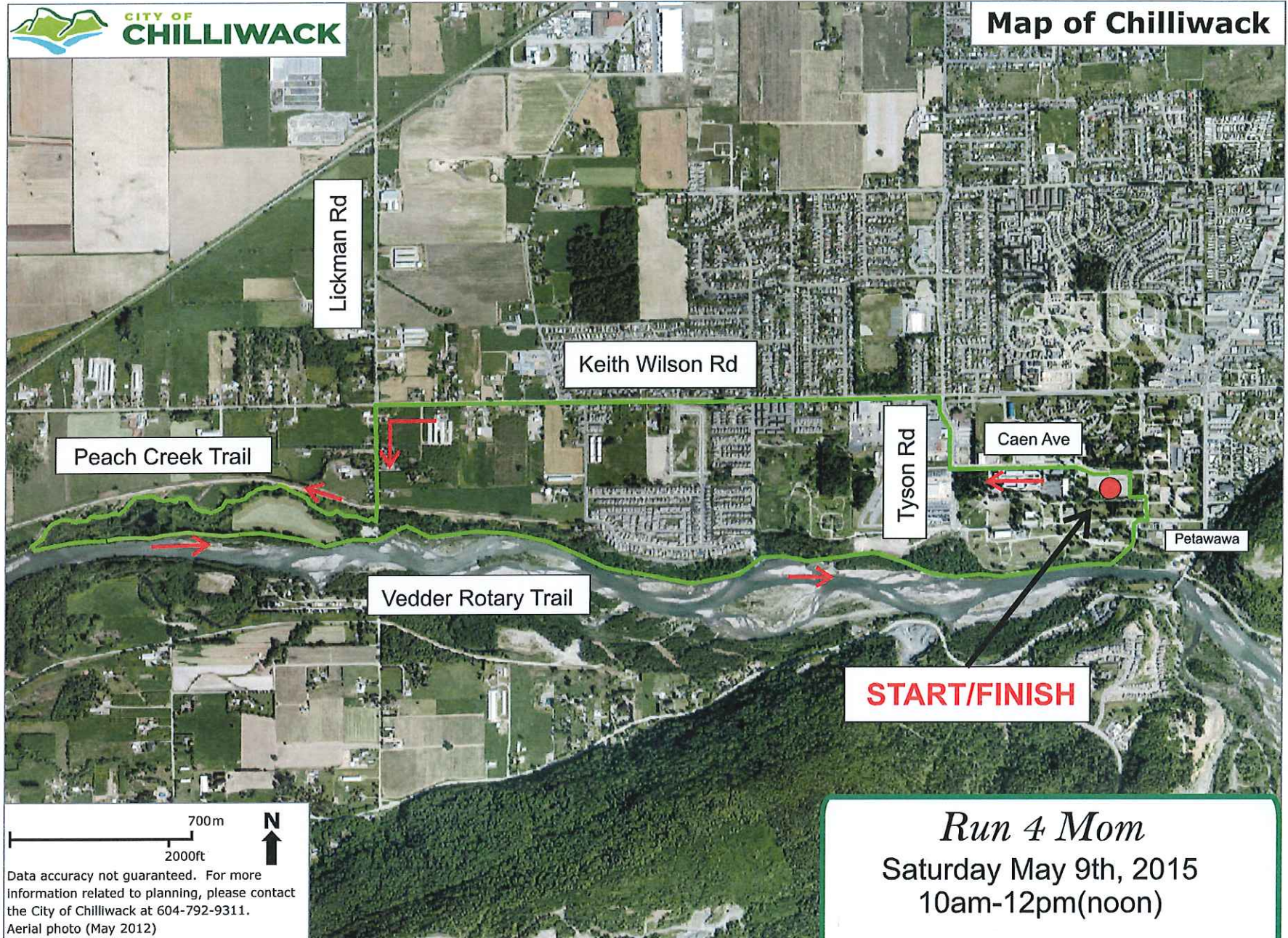


500m
1000ft
N
↑
Data accuracy not guaranteed. For more information related to planning, please contact the City of Chilliwack at 604-792-9311.
Aerial photo (May 2012)
Printed 16 March 2015

5 km route

Run 4 Mom
Saturday May 9th, 2015
10am-12pm(noon)
In support of
Women's & Children's Programs at
Chilliwack General Hospital



Printed 16 March 2015

10km route

Run 4 Mom
Saturday May 9th, 2015
10am-12pm(noon)

In support of
Women's & Children's Programs at
Chilliwack General Hospital